

Expansion Module



- ❖ **Connect to the STANDARD ELC-18 Series Module.**
- ❖ **Connect up to 31 modules.**

ELC-E-16AC-R

POWER

AC 110-240V

INPUTS

8 AC Digital

OUTPUTS

4 Relays (10A)

4 Relays (3A)

DIGITAL INPUTS

Signal 0: AC 0-40V Input current: <0.03mA

Signal 1: AC 0-40V Input current: <0.03mA

DIGITAL OUTPUTS

Output Type: Relay output.

Continuous Max. Current Value:

Q1 – Q4: Max 3A

Q5 – Q8: Max 10A



ELC-E-16DC-D-R

POWER

DC12V – DC24V

INPUTS

8 DC Digital

OUTPUTS

4 Relays (10A)

4 Relays (3A)

DIGITAL INPUTS

Signal 0: DC 0-3V Input current: <1.0mA

Signal 1: DC 8-24V Input current: <1.5mA

DIGITAL OUTPUTS

Output Type: Relay output.

Continuous Max. Current Value:

Q1 – Q4: Max 3A

Q5 – Q8: Max 10A



ELC-E-16DC-DA-R

POWER

DC12V – DC24V

INPUTS

6 DC Digital & 2 Analog / Digital

OUTPUTS

4 Relays (10A)

4 Relays (3A)

DIGITAL INPUTS

Signal 0: DC 0-3V Input current: <1.0mA

Signal 1: DC 8-24V Input current: <1.5mA

ANALOG OUTPUTS

Signal: DC 0-10V

DIGITAL OUTPUTS

Output Type: Relay output.

Continuous Max. Current Value:

Q1 – Q4: Max 3A

Q5 – Q8: Max 10A

SMS Module



- ❖ **Remote control the ELC 18 SuperRelay via SMS.**
- ❖ **Remote monitoring via SMS messages (Alarms, Status, etc).**
- ❖ **Easy configuration with free of charge xLogicSoft software.**

ELC-SMS-D-R

Incorporating the ELC-SMS-D-R module into a system allows the user full remote monitoring as well as remote control of the application via SMS (Short Message Service) on any GSM phone or PDA.

Worldwide availability, low operating cost, easy installation and integration in combination with high reliability makes SMS remote control and monitoring a desirable option in hard to reach, distant or hazardous environments.



GSM Network support:

The ELC-SMS-D-R is equipped with a Quad-band GSM module offering seamless functionality on 850Mhz, 900Mhz, 1800Mhz, 1900Mhz.

- Consult the SMS user manual for complete technical and installation details.

Ethernet Module

- ❖ Add the ELC-Ethernet module and provide Ethernet capability to your ELC SuperRelay.

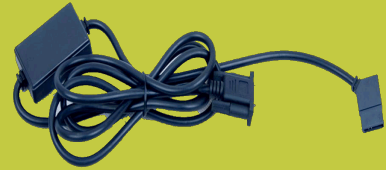


ELC-Ethernet-DC module
ELC-Ethernet-AC module



Cable Modules

- ❖ Two standard communication and configuration interface cables are available: RS232 and USB.

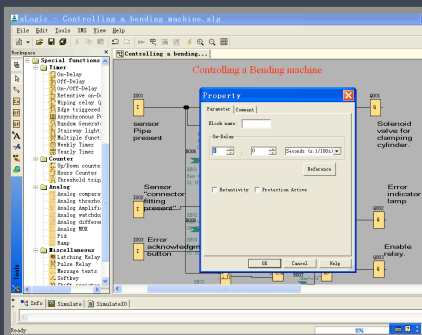


ELC-RS232
ELC-USB

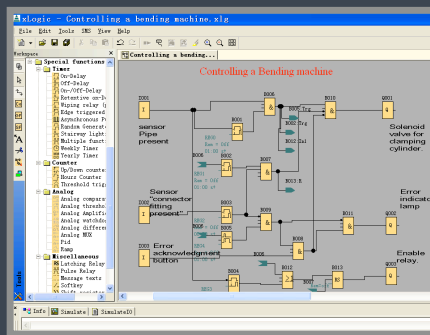


xLogicSoft

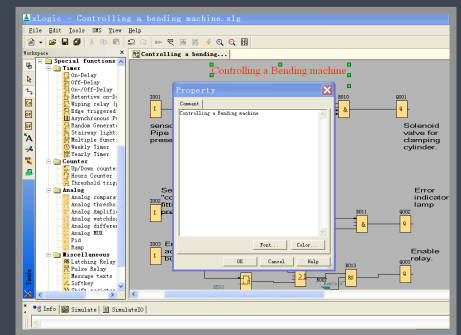
- ❖ Free of charge SuperRelay configuration software.
- ❖ Function Block / Ladder programming.
- ❖ Free upgrades for all future software versions.
- ❖ Library with pre-configured function blocks for ultra fast set-up.
- ❖ On-line Monitor & Off-line Simulation
- ❖ Free Personal Tutorials



Using the dialog boxes, function block parameter setup and modification is a quick and easy task to complete.



Link function blocks to complete your program. Set up as many as 256 (ELC-18) function blocks in one circuit program.



Use the "label tool" to write a comment, instruction or help note on the on the xLogic circuit program screen.